

## There are many CROs who perform flow cytometry, but only one expert...

FCS Laboratory is a custom flow cytometry site that features flexibility. We can proficiently perform not only the routine analyses such as surface marker evaluation to enumerate well defined cell subsets, but also receive assay transfers from sponsors or develop novel assays within our facility.

We pride ourselves on the ability to tailor any flow cytometry assay to meet our client's specific needs.

“Just name it, we can do it!”

## Our Mission

*We collaborate with our clients, respond to their needs, anticipate regulatory change, invest in our facilities and our people and maintain ourselves at the forefront of flow cytometry.*

We are certified as a women owned business

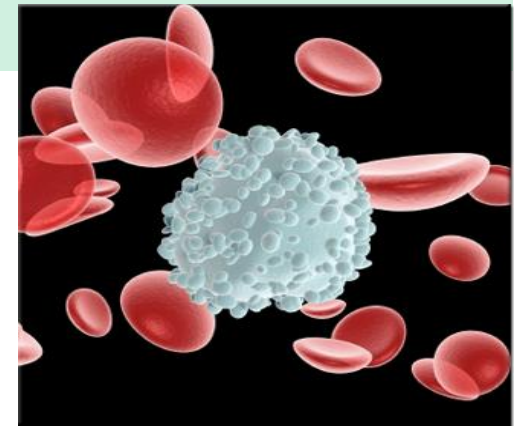


Certification# 2005114256

Flow Contract Site Laboratory  
13029 NE 126<sup>th</sup> Pl.  
Kirkland, WA 98034-7723



FLOW CONTRACT SITE  
LABORATORY



*Leaders in flow  
cytometry analysis for  
drug development*

[www.fcslaboratory.com](http://www.fcslaboratory.com)



## Who We Are

Flow Contract Site (FCS) Laboratory is a Limited Liability Company that operates as a contract research organization (CRO) with its main offering of flow cytometry-based assays.

FCS Laboratory will provide to its customers:

- **Specialized Service** – By focusing on flow cytometry services, FCS Laboratory is able to ensure that there is no dilution of the scientific or managerial focus.
- **Experience** – The owners have 17 years of combined experience in flow cytometry and 10 years of combined experience working in a Good Laboratory Practice regulated environment and are at the forefront for determining the criteria for flow cytometry assay and instrumentation validation.
- **Quality** – High quality data acquisition, rapid report generation and expert scientific analysis.
- **Rapid project turnaround** – With the state of the art equipment, FCS Laboratory will be able to provide results to sponsors within a rapid timeframe.

## Our Expertise

### Comprehensive Flow Cytometry

FCS Laboratory offers an integrated platform for nonclinical and clinical drug development based on expertise in:

- **Immunophenotyping**
  - ❖ T-lymphocyte, B-lymphocyte and Natural Killer cells (TBNK)
  - ❖ T-lymphocyte lineage
  - ❖ T-lymphocyte activation
  - ❖ B-lymphocyte surrogates
  - ❖ B-lymphocyte lineage
  - ❖ Custom panels are also available
- **Intracellular Protein Analysis**
  - ❖ Intracellular Cytokines
  - ❖ Phosphorylated Proteins
- **Cellular Functional Assays**
  - ❖ NK Cell Function
- **Bead Based Methods**
  - ❖ HLA Antibodies
  - ❖ Secreted Cytokines
- **Model Organism Evaluation and Cross-reactivity**
  - ❖ Human
  - ❖ Non Human Primate
  - ❖ Rodent



For inquiries or additional information please contact:

**Lynette Brown, MS, CHT**  
President, Flow Cytometry Specialist  
lynette.brown@fcslaboratory.com

**Jennifer J. Stewart, PhD**  
Vice President, Senior Scientist  
jennifer.stewart@fcslaboratory.com

Phone - (425) 821-3900

FAX - (425) 821-3925

Or visit our website

[www.fcslaboratory.com](http://www.fcslaboratory.com)