



The Marker



FLOW CONTRACT SITE
LABORATORY

FCS Laboratory Quarterly Newsletter

Fourth Quarter 2011

Issue 5

Inside this issue:

Impact of Temperature on Shipped Specimens 1

Upcoming Events 1

FCS Laboratory Fourth Quarter 2011 Update 1

Winter Fun in Juanita/Kirkland 1

Upcoming Events:

- NW Regional Cytometry Meeting, Seattle, WA March 2012
- Society of Toxicology Meeting, March 11–15, San Francisco, CA

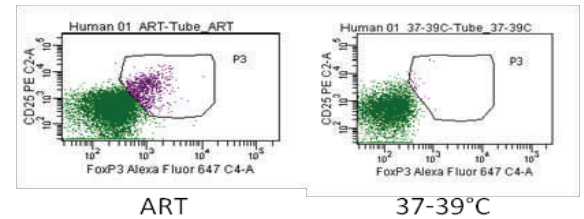


Impact of Temperature on Shipped Specimens

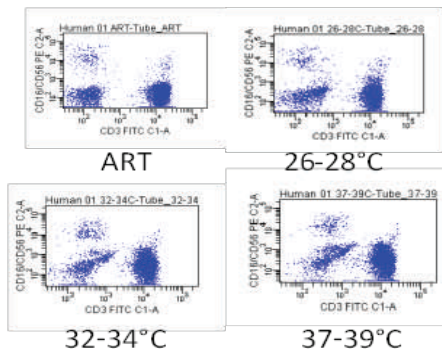
By: Lynette Brown, MS, CHT, Jennifer J Stewart, PhD

How can prolonged temperature extremes impact shipped specimens? As specimens are shipped to testing facilities for analysis there may be times when the specimen could sit in hot or cold weather for an extended period of time. Can there be negative effects when this occurs? At FCS Laboratory we have looked at prolonged specimen exposure to temperatures of 26–28°C, 32–34°C and 37–39°C compared to ambient room temperature. We found increased autofluorescence of the cells as temperatures increased.

Also, for some populations there can be a loss of signal altogether:



It is a good idea during validation of the assay to mimic extreme temperature conditions that the specimens might be subject to. In most cases with autofluorescence type issues, the gating can be adjusted to still give a comparable relative percent over the different temperature ranges. In the case where the signal is lost, it is highly important that a temperature monitoring system is in place so any changes are not attributed falsely to test article administration. In order to track temperatures in shipment, a temperature tag can be placed in the box to monitor the prolonged exposures. If you have any questions on these experiments please feel free to contact us.



FCS Laboratory Fourth Quarter 2011 Updates

- * ICCS meeting in Portland, OR October 16-18 was a success. Our poster, "A Novel Flow Cytometry Stimulation Assay using Cyto-Chex® BCT Tubes for use in Clinical Trials" was presented.
- * The two webinars series, Introduction to Flow Cytometry and Flow Cytometry Instrument Validation and Assay Validation, put on by the AAPS PharmaFlow Steering Committee were a success. If you missed out you can still view them on the AAPS website under [elearning](#).
- * We are continuing to help with the planning the 2012 NW Regional Cytometry Meeting. Stay tuned for more details.

Winter Fun in Juanita/Kirkland

www.explorekirkland.com

- * The Kirkland Performance Center Story Book Theater presents on the weekends in February "The Frog Prince."
- * "FiSHing for a Cure" charity gala to support Facioscapulohumeral (FSH) Muscular Dystrophy Research, January 28th at the Regency Bellevue Hyatt



13029 NE 126th PL
Kirkland, WA 98034
Phone: 425-821-3900
Fax: 425-821-3925
Email: info@fcslaboratory.com

We're on the Web!

